

The Pittsburgh Public Schools had a lot of good news to share during the past year:

- August 2009 brought the historic announcement that the School District had **achieved Adequate Yearly Progress (AYP)** for the first time. Achieving AYP means that the District has met state and federal targets set under No Child Left Behind.
- In November, we achieved **another big win** when we were awarded a \$40 million grant from the Bill & Melinda Gates Foundation to empower effective teaching. Developed collaboratively by Pittsburgh Public Schools and the Pittsburgh Federation of Teachers, our **Empowering Effective Teachers Plan** will help to assure that there is a highly-effective teacher in every classroom.
- Most recently, our District was **ranked 7th** in the nation among public school systems in large U.S. cities in the GreatSchools "Best cities to live and learn 2010" report.

Big news like this points to the remarkable progress we are making toward our vision of *Excellence for All*. And **The Pittsburgh Promise®** is at the center of our vision. Thanks to incredible support from our community, Pittsburgh Public Schools students, regardless of family income, may be eligible for a Promise scholarship to trade and technical schools that offer two-year degree programs as well as all colleges and universities in Pennsylvania.

Pathways to the Promise™ is helping to ensure that every student is Promise-Ready. Our programs and initiatives encourage students to **Dream Big** and **Work Hard** to meet Promise eligibility requirements by helping them to develop interests and build skills that can ignite their passion for learning and ensuring that they stay on course for success.

A Plan for Success. At Pittsburgh Public Schools, we are working hard to build a culture of excellence that encourages all students to achieve at high levels. We look forward to helping your child to be successful in school and in all aspects of life.



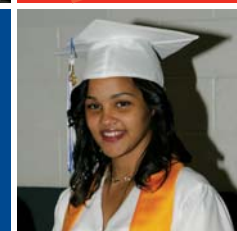
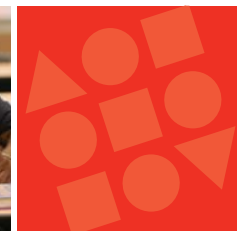
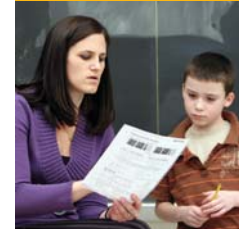
The Pathway to the Promise.™

School District of Pittsburgh
Communications & Marketing
341 S. Bellefield Avenue, Room 203
Pittsburgh, PA 15213

NON-PROFIT
ORGANIZATION
U.S. POSTAGE
PAID
Pittsburgh, PA
Permit No. 532

The Pittsburgh Public School District is an equal opportunity education institution and will not discriminate on the basis of race, color, national origin, gender, sexual orientation, age or disability in its activities, programs or employment practices as required by Title II of ADA, Title VI, Title IX, and Section 504. It is the policy of the Pittsburgh School District to make all programs, services, activities and facilities available and to provide reasonable accommodations to persons with disabilities. For information regarding accommodations, civil rights or grievance procedures, contact the Office of Employee Relations, Pittsburgh Public Schools, 341 S. Bellefield Avenue, Pittsburgh, PA 15213-3516; Phone (412) 622-3691 (Voice/TTY/TDD); Fax (412) 622-7968.

2010-2011 School CALENDAR



Pittsburgh
Public Schools



The Pathway to the Promise.™

K-5, K-8, 6-8, 6-12, High and Special Schools

2010 - 2011 School Year Calendar

Accelerated Learning Academies

2010 - 2011 School Year Calendar

Early Childhood

2010 - 2011 School Year Calendar

Welcome Back to School Event Schedule

Week of Aug. 30, 2010..... K-5, K-8, 6-8 & Special
Week of Sept. 6, 2010..... High & 6-12
Look for more information from your school in August.

First Day of School:

Aug. 26, 2010..... Teachers
Sept. 1, 2010 (Half-Day AM)..... **Grade 9 Students**
Sept. 2, 2010..... **All other Grade 1-12 Students**
Sept. 8, 2010..... **Kindergarten Students**

No School for Students:

Aug. 26, 2010..... Staff Clerical/Organization Day
Aug. 27, 2010..... Staff Clerical/Organization Day
Aug. 30, 2010..... Staff Prof. Development Day
Aug. 31, 2010..... Staff Prof. Development Day
***Sept. 1, 2010**..... Staff Prof. Development Day
***Half-Day of classes for 9th Grade students only.**

Sept. 6, 2010..... Labor Day
Sept. 9, 2010..... Vacation Day

K-5/K-8/6-8 Schools
Oct. 11, 2010..... **Parent/Teacher Conference Day**
Oct. 14, 2010..... Early Dismissal - Half-Day

6-12/High/Special Schools
Oct. 15, 2010..... **Parent/Teacher Conference Day**

Nov. 2, 2010..... Staff Prof. Development Day
Nov. 11, 2010..... Veterans Day
Nov. 25-26, 2010..... Thanksgiving Vacation
Dec. 23, 2010-Dec. 31, 2010..... Winter Vacation
Jan. 17, 2011..... Dr. King Day
Jan. 31, 2011..... Staff Clerical/Organization Day
Feb. 1, 2011..... Staff Prof. Development Day
April 15, 2011..... Early Dismissal - Half-Day
April 18-22, 2011..... Spring Vacation
May 30, 2011..... Memorial Day
June 16-17, 2011..... Staff Clerical/Organization Days

First Day of Second Semester:

Feb. 2, 2011..... Second Semester Begins

Last Day of School:

June 15, 2011..... **Students**
June 17, 2011..... Teachers

Report Card Dates:

Nov. 23, 2010..... First Quarter
Feb. 8, 2011..... Second Quarter
April 14, 2011..... Third Quarter
June 22, 2011..... Fourth Quarter

Welcome Back to School Event Schedule

Week of Aug. 23, 2010
Look for more information from your school in August.

First Day of School:

Aug. 16, 2010..... Teachers
Aug. 23, 2010..... **Grade 1-8 Students**
Aug. 26, 2010..... **Kindergarten Students**

No School for Students:

Aug. 16, 2010..... Staff Prof. Development Day
Aug. 17, 2010..... Staff Prof. Development Day
Aug. 18, 2010..... Staff Prof. Development Day
Aug. 19, 2010..... Staff Clerical/Organization Day
Aug. 20, 2010..... Staff Clerical/Organization Day
Sept. 6, 2010..... Labor Day
Sept. 9, 2010..... Vacation Day

K-5/K-8/6-8 Schools
Oct. 11, 2010..... **Parent/Teacher Conference Day**

Oct. 14, 2010..... Early Dismissal - Half-Day
Nov. 2, 2010..... Staff Prof. Development Day
Nov. 11, 2010..... Veterans Day
Nov. 25-26, 2010..... Thanksgiving Vacation
Dec. 23, 2010-Dec. 31, 2010..... Winter Vacation

Jan. 17, 2011..... Dr. King Day
Jan. 31, 2011..... Staff Clerical/Organization Day
Feb. 1, 2011..... Staff Prof. Development Day
April 15, 2011..... Early Dismissal - Half-Day
April 18-22, 2011..... Spring Vacation
May 30, 2011..... Memorial Day
June 16-17, 2011..... Staff Clerical/Organization Days

First Day of Second Semester:

Feb. 2, 2011..... Second Semester Begins

Last Day of School:

June 15, 2011..... **Students**
June 17, 2011..... Teachers

Report Card Dates:

Nov. 23, 2010..... First Quarter
Feb. 8, 2011..... Second Quarter
April 14, 2011..... Third Quarter
June 22, 2011..... Fourth Quarter

Welcome Back to School Event Schedule

Week of Aug. 30, 2010
Look for more information from your school in August.

First Day of School (Preschool / Early Intervention)

Aug. 26, 2010..... Teachers
Sept. 2, 2010..... **Students / Child Phase-in Day**

No School for Students:

Aug. 26, 2010..... Staff Clerical/Organization Day
Aug. 27, 2010..... Staff Clerical/Organization Day
Aug. 30, 2010..... Staff Prof. Development Day
Aug. 31, 2010..... Staff Prof. Development Day
Sept. 1, 2010..... Staff Prof. Development Day
Sept. 6, 2010..... Labor Day
Sept. 9, 2010..... Vacation Day

K-5/K-8/6-8 Schools
Oct. 11, 2010..... **Parent/Teacher Conference Day**

Oct. 14, 2010..... Early Dismissal - Half-Day
Nov. 2, 2010..... Staff Prof. Development Day
Nov. 11, 2010..... Veterans Day
Nov. 25-26, 2010..... Thanksgiving Vacation
Dec. 23, 2010-Dec. 31, 2010..... Winter Vacation

Jan. 17, 2011..... Dr. King Day
Jan. 31, 2011..... Staff Clerical/Organization Day
Feb. 1, 2011..... Staff Prof. Development Day
April 15, 2011..... Early Dismissal - Half-Day
April 18-22, 2011..... Spring Vacation
May 30, 2011..... Memorial Day
June 16-17, 2011..... Staff Clerical/Organization Days

Last Day of School-Preschool / Early Intervention

June 15, 2011..... **Students**
June 17, 2011..... Teachers and Assistants

Other Program Dates:

Oct. 11, 2010..... Conferences/Home Visits
Oct. 14, 2010 (PM only)..... Conferences/Home Visits
April 15, 2011 (PM only)..... Conferences/Home Visits
May 18, 2011..... Conferences/Home Visits

PARENT HOTLINE:

412-622-7920 | www.pps.k12.pa.us

